
IF YOU CAN THINK IT, WE CAN DO IT

www.jcl-logistics.com

JCL LOGISTICS



LOG

IST

ICS

JCL

TRANSPORT - CONTRACT LOGISTICS - SUPPLY CHAIN MANAGEMENT

JCL LOGISTICS FORMS A LOGISTICAL NETWORK THAT ACTS IN A PRODUCT AND CUSTOMER-ORIENTED MANNER AND SOLVES EVERY CHALLENGE IN A TARGET-ORIENTED AND PROMPT WAY.

IF YOU CAN THINK IT, WE CAN DO IT

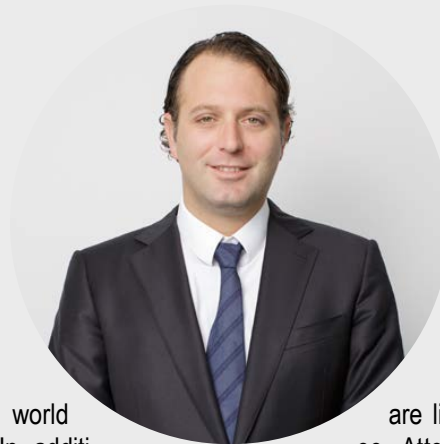
LOGISTICS

INDIVIDUAL LOGISTICS
SOLUTIONS THAT ARE SPECIFIC
TO THE CUSTOMER

www.jcl-logistics.com



WELCOME TO JCL LOGISTICS



We extend the world of logistics: In addition to classical logistics, JCL offers innovative and intermodal transport solutions that thanks to high specialisation on the specifics of diverse sectors in addition to transport and contract logistics also provide services that complete and optimise logistics. Through its experience and know-how, JCL makes the supply chain a genuine value chain.

It is our task to provide you with the right products and solutions. Quality works with passion and performance and has a solid base at JCL: company values that

are lived by every employee. Attentiveness to products and customer requirements, precision in time management and each individual step, sustainability when handling resources, transparency in each work step and cost efficiency for an ever optimum cost-benefit ratio form the self-understanding from which experience and thus logistical perfection grows at JCL. In time, in budget and in quality: these guidelines form the basis for efficient logistics processes in the age of intermodal transport.

STEPHAN JÖBSTL, CEO

"IF YOU CAN THINK IT, WE CAN DO IT"

JCL MISSION STATEMENT

COMPANY

WE ARE A SUCCESSFUL LOGISTICS COMPANY THAT IS ACTIVE WORLDWIDE IN THE AREAS OF TRANSPORT, CONTRACT LOGISTICS AND SUPPLY CHAIN MANAGEMENT.

For generations, JCL Logistics has developed its products and services and then developed them further and constantly aligned them to the future. We pursue a permanent increase in our company value in order to safeguard investments and to remain strong on the capital market.

With our core products Road, Rail, Air & Ocean and Plus+, JCL is driving the further development of innovation, tradition, mobility and logistics. We work according to the principles of integrity across functional and divisional boundaries.

OBJECTIVE

OUR GOAL IS TO CREATE INNOVATIVE CUSTOMER SOLUTIONS AS A TEAM AND AS A LEADING LOGISTICS COMPANY ALONG THE DIMENSIONS OF COST EFFICIENCY, ATTENTIVENESS, ECONOMICS AND KNOW-HOW TO GENERATE SUSTAINABLE CORPORATE SUCCESS AND FIRST-CLASS LOGISTICS SOLUTIONS.

JCL Logistics strives to set benchmarks with its products and their implementation in efficient handling with the resources available.

As a top employer, we want to recruit internationally qualified employees who offer our customers enthusiasm, know-how and the ability to work as a member of a team.

OUR EXPERTISE

WHAT MAKES US DIFFERENT?

OUR FOCUS IS ON THE CORE MARKETS LOCATED IN AUSTRIA, GERMANY, SWITZERLAND AND THE BENELUX COUNTRIES. OUR GOAL IS TO BE ACTIVE AND DEVELOP FURTHER IN THIS REGION AND TO GROW PERMANENTLY AND IN THE LONG TERM.

Due to our global network and competent partners, we can cover all logistics services worldwide. We are also committed to an Asset Heavy strategy. We are thus able to provide our customers with the necessary loading area and the required warehousing space, even in volatile markets.

■ GLOBAL PRESENCE

With around 40 sites and 1500 employees in Europe and Asia, the global JCL network makes every trading place reachable just in time. We use the possibilities of our IT system and network to make comprehensive optimisations in the work of our customers and in our own.

■ LOGISTICS SOLUTIONS FOR YOUR ENTIRE SUPPLY CHAIN

With in-depth know-how, we optimise the supply chain of our customers and ensure smooth transport chains. Precise planning, organisation and implementation of transport services.

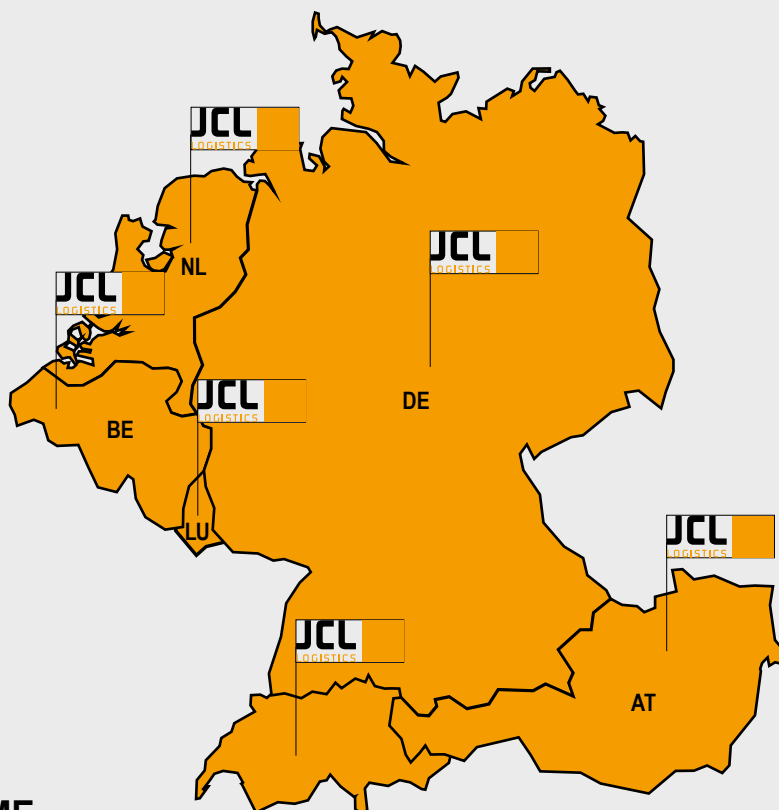
■ COMPREHENSIVE KNOWLEDGE OF THE SECTOR

Through precise knowledge of the sector and its boundary conditions, we offer individual transport solutions that are characterised by high efficiency and conservation of resources.

■ EFFICIENT AND RELIABLE PARTNER

Long-standing and satisfied customers are in the interest of JCL Logistics. Your requirements and our reliability are the most important criteria for us.

"WE TREAT OUR CUSTOMER'S MONEY AS IF IT WAS OUR OWN"



- IN TIME
- IN BUDGET
- IN QUALITY



IN TIME

Open communication of all variable criteria of an order and joint planning facilitate timely deliveries.



IN BUDGET

Joint planning and time-saving logistics solutions for the benefit of cost efficiency.



IN QUALITY

Intelligent and proactive solutions, new approaches and qualified specialist staff supply rapid solutions for all challenges and contribute to our quality.

VISION – MISSION – VALUES

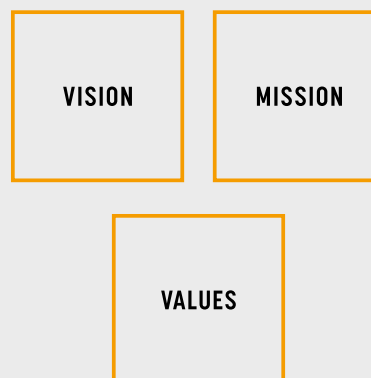
OUR VISION

... WE CREATE INTEGRATED LOGISTICS SOLUTIONS. WE HAVE BEEN IMPLEMENTING THEM IN CORE MARKETS AS DIVERSE TEAMS THAT IDEALLY COMBINE THE SECTOR EXPERIENCE OF OUR SPECIALISTS AND LOCAL RESOURCES SINCE 1777.

OUR MISSION

"WE SEE RESULTS ORIENTATION AS THE BASIS FOR THE FURTHER DEVELOPMENT AND THE GROWTH OF OUR COMPANY. WE UNDERSTAND THE PRODUCTS OF OUR CUSTOMERS AND THEIR CUSTOMER REQUIREMENTS AND SUPPORT THEM IN ATTAINING AND MAINTAINING LEADING POSITIONS IN THEIR INDUSTRIES."

Our superbly qualified and experienced employees provide innovative and tried-and-tested services, supported in the long term through our expertise in integrated end-to-end information management. We focus on the development and the growth in our core markets, with the clear mission of strengthening and expanding our presence towards the east. We use state-of-the-art and environmentally friendly supply chain and logistics technology and see ourselves as responsible Global Citizens.



OUR VALUES

THE BASIS OF THE INDUSTRIALISATION AND PROFESSIONALISATION OF OUR SERVICE PORTFOLIO IS OUR JCL VALUES BASIS.

It incorporates common values and the basis of our identity. It is our benchmark for the exchange of information with our customers, for information internally and the daily co-existence of all employees. It is not a rigid corporate policy structure but rather an active basis for successful working that extends itself with each task.

TRANSPORTING AND REALISING VALUES

- ATTENTIVENESS
- PRECISION
- COST EFFICIENCY
- TRANSPARENCY
- SUSTAINABILITY



ATTENTIVENESS

As a consistent corporate principle, attentiveness and respect for the products and requirements of our clients is the guiding statement for each and every employee.

TRANSPARENCY

Traceability and transparency along the supply chain are our obligation to meet the information requirement of our customers.

PRECISION

Our service portfolio is aligned to extreme precision as a result of decades of experience, stringent innovation processes and permanent further development.

SUSTAINABILITY

Environmentally friendly resource policy coupled with selective choice of modern means of transportation has made us a company that meets the global requirement of sustainability.

COST EFFICIENCY

The consistent industrialisation of our corporate structure creates a competitive portfolio of services for our customers' benefit.

HISTORY

IN THE LOGISTICS INDUSTRY FOR GENERATIONS

1777

ESTABLISHMENT OF THE
OLDEST GROUP MEMBER
POTT UND KÖRNER SHIPPING

UNTIL 1985

EXPANSION OF THE
SERVICE PORTFOLIO
TO INCLUDE FASHION
LOGISTICS

2008

COMMENCEMENT
OF COMPREHENSIVE
OVERLAND ACTIVITIES

2010

INCLUSION OF THE BUSINESS FIELD
E-COMMERCE IN THE PORTFOLIO OF SERVICES

2011

OPENING OF EUROPE'S MOST STATE-OF-THE-ART
LOGISTICS CENTRE IN WERNDORF. COMPREHENSIVE
STRENGTHENING IN THE RETAIL SECTOR AND MARKET
LEADERSHIP IN THE BENELUX REGION AND BEYOND

1928

ESTABLISHMENT OF THE
COMPANY BY **JÖBSTL SENIOR**
IN GRAZ

UNTIL 1984

CONSCIOUS
DEVELOPMENT OF
EXPERTISE IN THE
AREA OF FURNITURE
LOGISTICS

2003

OWN NVOCC
ORANGE OCEANLINE

2014

RELOCATION OF THE HEADQUARTERS TO
SWITZERLAND - THE COMPANY IS ONCE
AGAIN FULLY UNDER PRIVATE OWNERSHIP

2009

STRATEGIC ACQUISITIONS LEAD TO A
COMPREHENSIVE DIVERSITY OF PRO-
DUCTS AND SERVICES

2002

DEVELOPMENT OF THE
AIR & OCEAN AREA AND
EXPANSION TO ASIA

SPECIAL SERVICES THAT
EMPHASISE THE VALUE OF A
PRODUCT

www.jcl-logistics.com



JCL PRODUCTS

JCL ROAD, RAIL, AIR & OCEAN, PLUS⁺

JCL LOGISTICS, WHICH HAS ITS HEADQUARTERS IN ZUG (SWITZERLAND), OPERATES INNOVATIVE LOGISTICS AND OFFERS OPERATIONAL ACTIVITIES IN THE AREAS OF **ROAD, RAIL, AIR & OCEAN**, CONTRACT LOGISTICS AND WAREHOUSE MANAGEMENT UNDER OUR PRODUCT NAME **PLUS⁺**.

By specialising in the areas **Retail, Automotive, Health & Pharmaceutical, Chemical, Industry, FMCG** and **Drinks Logistics** JCL forms a logistical network that meets the individual requirements of these sectors.

In addition to a lean corporate structure and years of experience in operational business processes, the company is characterised by maximum customer orientation. The global JCL network makes every trading place reachable just in time. Our highly flexible logistics system creates maximum commercial synergies. Irrespective of whether it involves transport, warehousing, packaging or picking, JCL Logistics offers the ideal logistics concept. Transparency towards the customer is a matter of course for us.

Our employees “accompany” your goods from start to finish of their journey and keep you informed at all times about the status of the transport. State-of-the-art **IT-track & trace-systeme** provide us with **information in real time**, that we pass on to you immediately.

JCL Logistics assumes the responsibility for the products of the customers along the entire supply chain and solves every challenge in a target-oriented manner and just in time, in line with the motto: **“IF YOU CAN THINK IT, WE CAN DO IT”**

JCL UNDERSTANDS A SUCCESSFUL LOGISTICS SOLUTION TO MEAN, ABOVE ALL, THE ART OF REDUCING COMPLEXITY.

ROAD

ON A SOLID BASIS

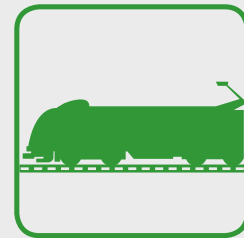
Our transport solutions in the area of **Road** offer both a pool of **own swap body**, road trains for fixed collective goods lines and our **own fleet** as well as a fixed third-party fleet, depending on requirements. Our service portfolio in the area of truck overland transport incorporates the core competences **full and partial load transport (FTL, LTL)**, **container transport**, **project consignments**, **parcel and piece good consignments**, **collective transport**, **transport with fixed delivery dates**, and **express transport** as well as **branch delivery**. With all transports assignments by truck, **vehicles of the latest generation** are used that are characterised by low consumption and low emissions (EURO 6). Our products and product solutions are subjected to a comprehensive, tested and **certified quality programme**.



RAIL

EVERYTHING ON RAIL

For our **rail-bound** national and international transport solutions and the associated individual logistics solutions, we offer tailor-made customer solutions. **Covered wagons** (private, railway-own wagons, e.g. Himrrs 80 EUP), **container-carrying** (private and railway-own wagons, e.g. 45' pallet-wide containers, large-area containers and 6 axle wagons 90'-2x45' containers), **cross-trade management**, **special and project rail transport** (private or railway-own flat wagons e.g. Laads, R wagon, Laaprs) and **consolidation** – depending on requirements. Use of the full service portfolio at all JCL companies.



AIR & OCEAN

IN THE AIR AND ON WATER

Our international transport solutions by **air and sea freight** offer tailor-made customer solutions. **Full or less than container loads (FCL, LCL)**, active and global **space allotment management**, **cross-trade management**, **project management and consolidation** – depending on requirements.



PLUS+

AT THE PLUS OF LOGISTICS

Contract logistics and warehouse management under our product name **PLUS+** stands for customer-oriented service and a product-specific handling that **upgrades goods, emphasises qualities and takes them to their point of destination ready for sale and presentation**. We group the **preparation or finishing** of goods of diverse product groups and sectors under the term PLUS+. These optimising **value-added services** are individually designed and constantly extended for every customer.



INDIVIDUAL BENEFITS FOR EVERY SECTOR

JCL INDUSTRY SOLUTIONS

JCL HAS CREATED STRUCTURES THAT INDIVIDUALLY SERVE THE DIVERSE REQUIREMENTS OF VARIOUS SECTORS. IN THIS WAY, TRANSPORT AND LOGISTICS BECOME THE UNIFORM ENGINE FOR INDUSTRY AND BUSINESS, FOR PRODUCTS AND SERVICES - RELIABLY FROM ONE SOURCE.



RETAIL

In accordance with the constantly growing market requirements-**speed, flexibility and efficiency** that the retail industry places on today's logistics, JCL has developed a **flexible supply chain management system** in order to be able to react at any time and immediately to the market. For us, logistics in the retail sector with its segments such as **Fashion, Furniture, Electronics and High-Tech** means **optimising, completing and supplementing your product and your supply chain** through proactive overall concepts in order to thus create an **additional** value for you.



AUTOMOTIVE

As the **automotive sector** is characterised by a great diversity of product variants, coupled with fluctuating production volume at the same time, each supply chain must meet high standards with regard to **quality and flexibility**. As a car manufacturer or supplier, you can rely on our **global network** for your **transport requirements** and your supply chain. Our **industry solutions** ensure that your **components and vehicles reach their destination reliably and promptly**.



HEALTH & PHARMACEUTICAL

Systematic **attention** and **experience** are our companions in the **Health & Pharmaceutical sector**, through which we safely transport products with diverse specifications. **We transport and store packaged products, raw materials and devices of the health sector**. The diverse spectrum includes, for instance, **temperature-sensitive drugs** and **packaged semi-finished products** in the form of granulates. They all require specific procedures for transport and storage with regard to temperature management or air conditioning. Highly **sensitive medical devices** are transported by us **using specifically spring-suspended semi-trailers**. With these services, we abide by the **statutory guidelines** and **country-specific requirements**. Our quality management system and the application of **industry standards** are also used at our company.



CHEMICAL

With individual **precision and expertise** for each sub-area, we meet all the requirements of the **Chemical sector** based on **safety, individualised product handling and delivery in line with deadlines**. We transport and store packaged **bulk goods of the Chemical sector – liquids, powders and granulates**. In order to guarantee the safety of the products of our customers also after production, only **specially qualified JCL employees are used** who regularly participate in training and further courses. **Hazardous Goods Officers** ensure that the **goods of our customers are loaded in a way that is compliant with safety regulations and grouped according to statutory requirements and standards (e.g. SQAS etc.)**.



INDUSTRY

For the industry sector, we provide a large range of scalable transport solutions in the sectors: **wood, pulp & paper, steel, agricultural, turbines and heavy machines**. In international project business, JCL is your ideal partner for transport, particularly for **heavy goods** and consignments with an **exceptional requirements profile**. Our **global JCL network** is available to you **24 hours a day, 365 days a year**. We supply solutions – from **microchips to complete industrial systems** and complete support from our team on site during the entire process.



FMCG

Due to our many years of experience in the sector, based on the requirements of the **FMCG sector** (permanent cost and productivity constraints), we have developed **customised logistics solutions**. We optimise your **entire supply chain** end to end and offer a pool of **individual services**. In addition to professional **storage** we offer you **all warehousing methods**, the transport of **piece goods** and also Europe-wide **partial and complete loads** (e.g. ambient food, commodity goods). We create **efficient product tracking and verification** through **seamlessly documented history** of goods with **Track & Trace** also within the product logistics processes.



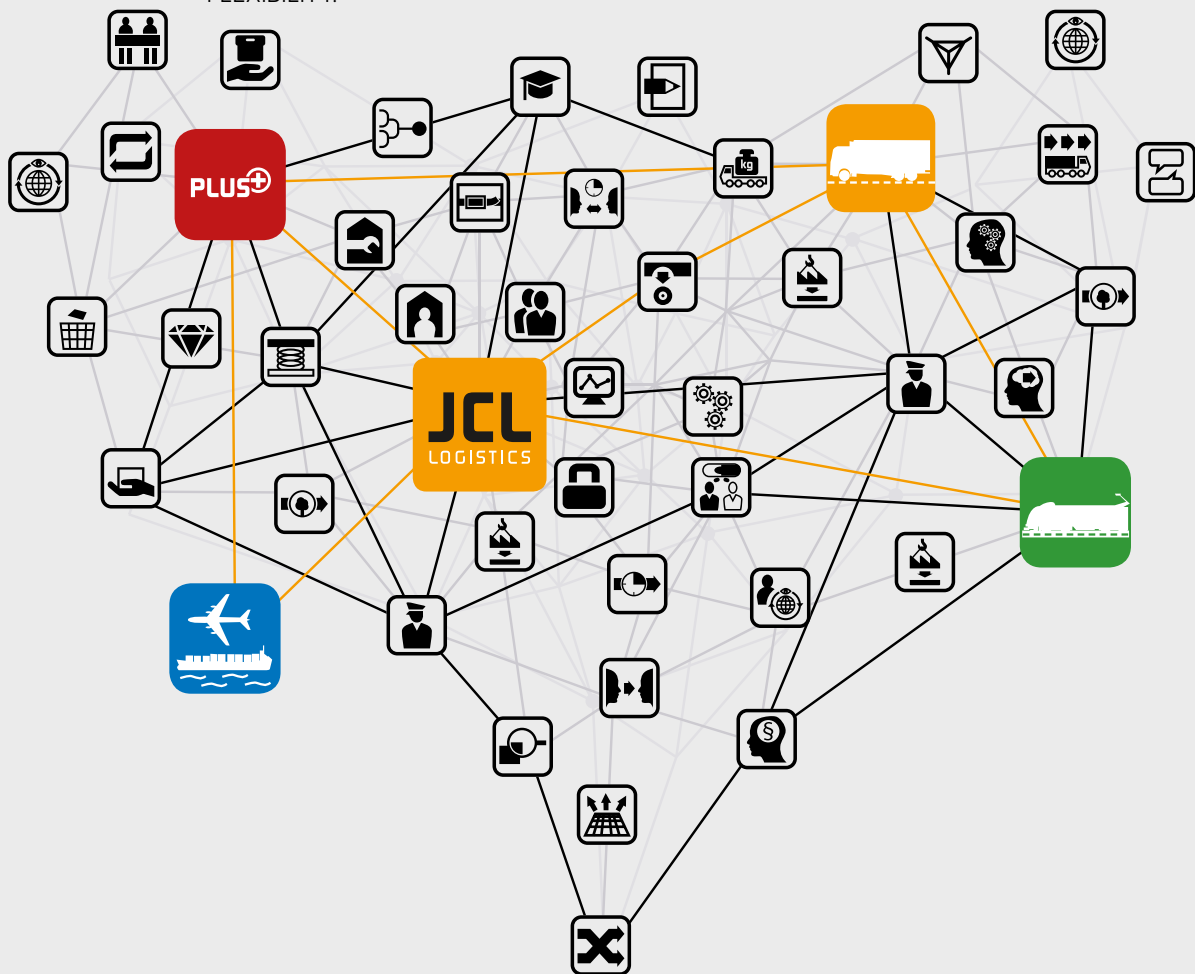
DRINKS LOGISTICS

In the area of Drinks Logistics, JCL offers individual services and a comprehensive logistics system for **fragile und sensitive** goods, for instance **wines, spirits, beers and other drinks**. Our industry expertise offers specific services that take your delivery **safely and reliably** to your desired destination and support your **entire supply chain** in the area of the international drinks industry. In addition to the **picking** of your goods, we also deal with the special **packaging and protection** and offer, among others, secure **shelf and block storage, box and bottle picking and end-to-end Track & Trace**.

JCL LOGISTIC SUITE

JCL QUALITY THROUGH INDIVIDUAL SERVICE

THE REQUIREMENTS IN TRANSPORT MANAGEMENT ARE IN A PERMANENT STATE OF FLUX. THE COMPLEXITY OF THE LOGISTICS SYSTEMS, SHORTER LEAD TIMES, COST-EFFICIENT TRANSPORT ROUTES AND A GLOBAL NETWORKING REQUIRE PERMANENT FURTHER DEVELOPMENT AND MAXIMUM FLEXIBILITY.



Individual requirements and tasks cannot be viewed in isolation from one another. That is why we have developed a logistic suite in order to flexibly integrate our individual services with our products. Intermodality and perfect management of all interfaces are the key for a smooth movement of goods and optimum utilisation of resources – according to economic and ecological criteria.

With JCL, you will reach your customers directly and without any detours. Our individual services extend from delivery to the door, installation on site by qualified fitters, returns of old furniture, to professional disposal – you determine the scope.

SPECIAL SERVICES THAT EMPHASISE THE VALUE OF A PRODUCT



TRACK & TRACE

JCL keeps you constantly informed about the status of your consignment. With modern Track & Trace systems and, on request, also by personal notification. Here, an employee accompanies your consignment from the creation of requirements until the completion of delivery so that you can concentrate in full on your core business.



EXPERTISE

We have far-reaching know-how with regard to logistics for the sectors Retail, Automotive, Health & Pharmaceutical, Chemical, Industry, FMCG and Drinks Logistics. Our outstanding specialist expertise stems firstly from our years of experience and the fact that we have grown with our customers. Secondly, our healthy growth is also an enrichment for our expertise.



CUSTOMS CLEARANCE

We are highly familiar with customs clearance processes with cross-border transport. We deal with all the administrative tasks that occur and handle customs clearance in a professional manner.



CUSTOMER SOLUTIONS

JCL supports your supply chain processes with individually designed web portals and provides you with an overview, starting with the goods ordered, and the production, to the actual transport and the warehouse inventory. On the basis of our transport management system, the JCL IT team offers you an individual, customer-specific solution and supports you in your daily challenges.

INSTALLATION

We not only deliver reliably, we also ensure that furniture or electronic devices are properly set up at your customer's premises. For these orders, we only send professionals such as carpenters and fitters. They reliably assemble the goods. Professionally, securely and quickly. Your customers will remember you in a positive light.



PERSONAL TRACK & TRACE

With each individual step along the entire transport route, our employees accompany your goods on their journey from start to finish and keep you informed about the progress of the consignment at all times. Information about e.g. the shipping of the goods or their arrival at the end customer's warehouse is not only automated but in most cases forwarded by the scheduler in person to the customer.



ONE-FACE COMMUNICATION

We ensure that our customers are not passed from one contact person to the next. With a central scheduler who organises and coordinates the services and forges new paths together with our customers, we reduce the complexity.



NETWORK

The logistics sector is a complex field with numerous participants. For our logistics services, we only use the best partners and do not make any compromises. It is part of our responsibility to use partners with high specialist expertise and suitable equipment. We have years of knowledge of the logistics market and know which carriers comply with our standards and can meet the requirements of our customers.





ECO LOGISTICS

From intermodal solutions to transportation with a particularly small carbon footprint, JCL forges new paths for its customers, including away from well-trodden paths. Through precise monitoring of the market, careful selection of the carriers and intelligent linking of the means of transport, the specialists at JCL create innovative transport solutions that perfectly combine efficiency with the maximum possible environmental protection.



PROJECT-RELATED GOODS

Very large projects such as the setting up of an entire industrial system including production systems place the highest demands on logistics: all parts have to be delivered in a timely manner and in precisely the order that is required for efficient assembly on site. With project-related goods, a competent selection of the transport partners and routes is just as vital as experience and a precise risk assessment.



LEARNING

Due to our close involvement in the production process, as an internationally networked company, we are able to respond quickly and competently to new challenges. Modern transport solutions, standardised IT systems as well as highly motivated employees make it possible for us to react quickly to the changing requirements of our customers.



PROJECT ACCOMPANIMENT

JCL takes you by the hand and actively supports you in issues of system integration, from consulting to conceptual design, planning and accompaniment during the implementation in order to guarantee a smooth, timely procedure for you. The JCL IT team has many years of sector-specific experience in the handling of customer projects and together with you lays the foundation for a successful partnership based on successful project handling.

JUST IN TIME

Due to the high degree of automation in automotive production, the time frames for the delivery of parts for vehicle production are extremely tight. Just-in-time deliveries directly to the production line are therefore standard today. In our long-standing close collaboration with the international automotive industry, we have always proven ourselves to be a committed partner who carries out deliveries reliably and on time.



FLEXIBLE SPECIAL TRIPS

Unforeseeable events or special measures for quality assurance that are not carried out until directly before vehicle assembly on the production line may mean bottlenecks in parts supply at short notice. In extreme cases, this can result in a stoppage in production. We organise special trips at short notice and around the clock in order to guarantee the supply to production of urgently required components.



INTELLIGENT SOLUTIONS

Timely delivery, minimum risk and optimum cost efficiency are always the focus when selecting transport solutions. If there should nevertheless be unforeseen events that cause delays, we ensure prompt and straightforward solutions. In most cases, the customer does not learn of the problem until we have already solved it for him.



DATA SECURITY

JCL has a well-founded, solid base for your system integrations and offers you security of the highest order. We use the latest server technologies in the most state-of-the-art data centre in Austria and can offer you high failure safety, state-of-the-art data back-ups and unconditional data security. Our systems are located in a secured cloud, can be reached worldwide and are optimised for Big Data.





RISK MINIMISATION

When selecting transport partners and routes, we strive to keep the risk as low as possible. Due to our long-standing close collaboration with truck operators, railway companies, shipping companies and airlines, we find the optimum solution for you at all times. Together with reliable partners around the world, the experienced employees at JCL ensure that your goods arrive at their destination safely and in a timely manner.



SYSTEM FLEXIBILITY

Highly networked and automated industries require modern and flexible logistics solutions. Perfect communication plays a decisive role here. At JCL, both standardised IT system and customer solutions with direct connection to the customer as well as the great personal commitment of the employees ensure a prompt and precise flow of information between the partners – around the clock and worldwide.



QUALITY ASSURANCE

We comply meticulously with statutory provisions and the requirements of our customers. For us, sector-relevant certifications and quality management are the standards; in the process, we also impose strict rules on ourselves in order to be a reliable and competent partner for our customers.



PROCESS-BASED AGILITY

JCL works based on higher-level processes, standards and guidelines that guarantee you maximum quality with low implementation times at the same time, coupled with full flexibility. The many years of experience of our IT team, together with their expertise, contributes to the development of sustainable solutions in line with requirements and that meet cost-efficiency requirements at all times.

PRE-ASSEMBLY

In order to reduce the assembly time at the plant even further, parts that are built into a vehicle in high variance are pre-assembled by us. This demanding work is carried out by our qualified employees in air-conditioned halls specifically adapted for this purpose. The configuration of the modules and the directly following delivery to the production line is done by call-off at short notice (Just in Sequence) using an IT system.



SAFETY PLUS

We attach the greatest importance to safety. All the employees used, the sector-relevant equipment, means of transport and warehousing options correspond to statutory specifications and do not permit any gaps in safety. We do not take any risks and already exclude many of them beforehand through planning, training, maintenance and the use of the latest safety precautions.



TRANSPORT PROTECTION

From shirts to pianos – we have the right equipment in order to transport your product safely and without damage. Another factor is our qualified personnel who know exactly what transport logistics requirements the products place on us.



SYSTEM INTEGRATION

JCL links the different IT systems with one another and helps to ensure a consistent flow of information for you. We provide all the transport-relevant information in electronic form or import order data from third-party systems. The JCL IT team integrates individual systems quickly and efficiently to form a joint unit. With individual reports that are sent automatically on the entire progress of the transport, you never lose connection to the electronic world.





ONE TO FOUR-MAN DELIVERY

With a one to four-man delivery, it can be guaranteed that bulky products (0–500 kg) can also arrive at the destination safely and without damage. Our years of experience help us to assess when the use of several employees is required. In the process, we do not make any half-hearted compromises. Corresponding equipment and qualified staff transport heavy and unwieldy goods quickly and without damage to their place of destination.



DUTY OF CARE

JCL handles all goods with the greatest of care at all times. From handling to loading and the careful compliance with safety provisions; with each process, JCL handles the products of the customers with great care.



DISPOSAL

You get what really counts from us – the product in the best condition and at the right place. In the process, inherited liabilities such as packaging material or old furniture should not be a problem that you or your customers have to deal with. We ensure that packaging material and old furniture are properly disposed of.



TRANSPARENT COMMUNICATION

Highly networked and automated industries require modern and flexible logistics solutions. Perfect communication plays a decisive role here. At our company, both standardised automotive IT systems with direct connection to the customer as well as the great personal commitment of the employees ensure an optimum flow of information between the partners, around the clock and worldwide.

RETURNS MANAGEMENT

We take over the integrated returns management for you. Based on your specifications, we assess the returned goods and initiate the corresponding process. We restore products up to a certain degree and take over the transport to the desired point of sale. The reliable handling of the returned goods should not be your concern, but rather our remit.



FINISHING

Particularly in the retail sector, appearance is a decisive factor to awaken the interest of end customers. That is why we ensure that your products are prepared ready for sale. We find customer-friendly solutions to give the last finishing touches to your goods. Our professionally skilled employees are specifically trained in your product and know how to best handle it. With our product logistics expertise, you save staff, space and time.



PROCESS OPTIMISATION

We develop process-optimising concepts that are characterised by high efficiency and cost-effectiveness.



ASSEMBLY

We assemble goods professionally and do not only get the best out of the product from a visual perspective. Our professionally highly skilled employees and our multi-user warehouse mean that we are able to assemble products for sale beforehand. Your sales employees thus do not have to waste any valuable time with assembly work and can devote their attention to the customer.





CUSTOMER CARE

Both with classical transport and with comprehensive involvement in the entire supply chain – JCL sees its role not only as a pure service provider but also as a committed partner to its customers. Great interest and detailed know-how of our employees about the respective sector and/or the goods to be transported also make JCL a logistics partner for you that you can rely on.



ON-SITE SERVICE

If the transport of the goods is particularly challenging, such as the transcontinental delivery of solar systems, we provide an adviser who inspects the goods on site and provides the client with expert advice. An optimum transport concept is then drawn up together; this concept extends from professional packaging to the selection of the ideal carrier.



PARCEL DELIVERY

We take over the delivery to the end customer for you by parcel using one, two or four-man handling – depending on requirements. With the use of specially qualified employees for business-specific and customer-oriented services, we offer you quick and professional delivery of goods.



OPEN OPTION

We find the best transport solution for you at all times. In the event that there are several possibilities in the selection of the carriers and/or transport route, we will inform our customer about the different variants. From the costs over the term to the selection of the transport partner – we offer transparent and easily comparable solutions. As a competent partner with a wealth of experience, we are on hand to advise our customers.

CONCEPTUAL PLANNING

Our services go well beyond the standard. We develop for you and with you optimum, integrated solutions in the areas of transport and product logistics. In the process, we develop process-optimised concepts in order to achieve maximum efficiency from your supply chain and reduce the complexity of the processes.



INTERVAL DELIVERY

In addition to the storage of vehicles and components, we also carry out interval deliveries in the aftermarket sector with which we, for example, supply a network of dealers in a large area with spare parts or accessories. The call-off order by the customer is done using a standardised IT system; the trips to the different sites are carried out at a previously defined interval.



QUALITY AND QUANTITY

In the right quantity and in the right condition; we avoid delaying and problematic circumstances from the outset. The testing of quality and quantity is carried out by us in a professional manner. In the process, you will be permanently notified of the condition of your goods using detailed, IT-based reporting.



SPECIAL CONSIGNMENTS

Special goods require special transport solutions. From special equipment for heavy goods to open-top containers for large-scale machines, we provide the best solution for you. With our great know-how and wealth of experience, we “accompany” your special consignments around the world, from forward carriage to on-carriage, from/to the port, via sea and air transport to the “last mile”.



WE NETWORK LOGISTICAL PROCESSES

OUR COMPREHENSIVE EXPERTISE

A USE OF THE CORRECT IT SYSTEMS MEANS THE SIMPLIFICATION OF PROCESSES, TRACEABILITY, A FASTER RESPONSE SPEED AND HIGHER COST EFFECTIVENESS. WE MAKE USE OF THE POSSIBILITIES OF OUR SYSTEM AND NETWORK IN ORDER TO MAKE COMPREHENSIVE OPTIMISATIONS TO THE WORK OF OUR CUSTOMERS AND OUR OWN. IF THESE IT SYSTEMS ARE NOT YET AVAILABLE AT CUSTOMERS, WE CREATE AND IMPLEMENT THEM.



JCL



SYSTEM INTEGRATION

We combine yours and our systems to form a joint unit.



CUSTOMER SOLUTIONS

We provide you with adapted tools for your daily challenges.



PROJECT ACCOMPANIMENT

We actively accompany you through all project phases.

DATA SECURITY

We offer you maximum safety, global availability and the latest technology.



PROCESS-BASED AGILITY

We make maximum agility and quality possible for you thanks to higher-level processes.





LOGISTICS

JCL QUALITY MANAGEMENT

QUALITY MANAGEMENT SYSTEM GLOBALLY CERTIFIED

OUR QUALITY MANAGEMENT SYSTEM IS AN INTEGRATED MANAGEMENT INSTRUMENT THAT ENSURES THE CONSTANT OPTIMISATION OF OUR SERVICES. WE DEVELOP AND INTEGRATE THE LATEST INDUSTRY STANDARDS AND PROCESSES WITH REGARD TO THE RESPECTIVE MARKET REQUIREMENTS IN THE SECTOR OF NATIONAL AND INTERNATIONAL LOGISTICS. WE ALSO STAND FOR QUALIFIED, MOTIVATED AND EXPERIENCED EMPLOYEES AND ATTACH VERY GREAT IMPORTANCE TO BASIC AND FURTHER TRAINING FOR OUR STAFF.

■ CERTIFICATE ISO 9001

With our ISO 9001 certification, a certified quality management system according to ISO 9001, we make it possible for our customers and partners to make a transparent and objective assessment of our services – and to do so all over the world for the ISO 9001 standard is seen as a global benchmark of quality.

■ CERTIFICATE ISO 14001

The international standard ISO 14001 is the world's most important definition and requirement of an environmental management that companies and other organisations should or can include and perform.

■ CERTIFICATE ISO 18001

With the certification of occupational safety and health protection, we not only improve the safety of our employees, we also increase the productivity of our company. The OHSAS 18001 defines globally valid criteria for correspondingly optimised management systems.

■ CERTIFICATE SQAS

Safety and Quality Assessment System, in brief SQAS, is a standard of the European Chemical Industry Council (cefic) and is used to rate the quality, safety and environmental standards of logistics service providers.

■ CERTIFICATE AEO

With the AEO (Authorised Economic Operator) certification, our end-to-end international supply chain is ensured from the production of the goods to the delivery to our customer.



**GLOBALLY
CERTIFIED**



JCL LOGISTICS STANDS FOR TRANSPORT CONTRACT LOGISTICS AND SUPPLY CHAIN MANAGEMENT AND HAS TO COMPLY WITH VARIOUS NATIONAL AND INTERNATIONAL LAWS IN THE COURSE OF ITS BUSINESS ACTIVITIES.

IN ADDITION TO THE RESPECTIVE COUNTRY LAWS, THESE ALSO INCLUDE SPECIFICATIONS FROM THE EU OR LAWS TO PREVENT AND COMBAT CORRUPTION (ANTI-CORRUPTION LAWS) WITH INTERNATIONAL IMPACT. CORRUPTION ACTIVITIES ARE SEEN AS CRIMINAL OFFENCES TO BE PROSECUTED AT INTERNATIONAL LEVEL AND ARE SPECIFICALLY PROSECUTED IN BOTH THE PRIVATE AND PUBLIC SECTOR. IN AWARENESS OF THIS RESPONSIBILITY, THE JCL GROUP HAS DEFINED INTERNAL BENCHMARKS FOR GOOD CORPORATE MANAGEMENT AND ESTABLISHED THEM ACROSS THE COMPANY.

JCL CODE OF CONDUCT

OUR "CODE OF CONDUCT" DEFINES STANDARDS AND EXPECTATIONS OF THE DAY-TO-DAY ACTIVITIES OF OUR EMPLOYEES.

It includes the detailed basic values of the company and incorporates conduct guidelines that our employees observe and abide by. It also protects our values, preserves our integrity and represents a set of rules for decisions relating to business activities that are always taken with due consideration and responsibility in the interest of moral integrity. To avoid any conflicts of interest, all JCL employees abide without exception by the valid laws in all markets served by us, alongside our internal regulations. Our managers have a role model function here.

JCL ANTI-CORRUPTION GUIDELINES

OUR "ANTI-CORRUPTION GUIDELINES" WERE ESTABLISHED ON THE PRINCIPLE OF FAIRNESS, INTEGRITY AND RESPECT FOR OTHERS.

In the area of preventing and combating corruption, JCL Logistics is implementing the international standards by creating these guidelines. In this context, our directive is to create clear guidelines and instructions for action.

ECOLOGY

ECOLOGICAL RESPONSIBILITY OUT OF CONVICTION

FOR US, ECOLOGICAL RESPONSIBILITY MEANS MORE THAN A FLEET THAT IS STATE-OF-THE-ART. FOR ONLY AN EXPEDIENT COMBINATION OF MEASURES, INTELLIGENTLY DESIGNED PROCESSES AND THE EXPLOITATION OF THE ENVIRONMENTALLY FRIENDLY POTENTIAL WITHIN THE GIVEN FRAMEWORK CONDITIONS LEAD TO WHAT WE WANT TO ACHIEVE ECOLOGICALLY: SUSTAINABLE AND RESPONSIBLE WORKING, DAY IN, DAY OUT. PARTICULARLY THE LOGISTICS SECTOR CAN PROVIDE EVIDENCE OF SUSTAINABILITY WITH CONSCIOUSLY ECOLOGICAL ACTIVITIES.

Our data structure facilitates a detailed calculation of the CO₂ emissions. We are thus able to initiate expedient steps to minimise emissions and to provide our customers with comprehensive information on their consignment.

INTELLIGENT SOLUTIONS

JCL is based on an efficient, agile and open architecture and technology. With our transport and IT system solutions, we ensure optimum fleet utilisation, thus increasing the efficiency of the transport, bringing down waiting times and reducing transport tours and therefore the CO₂ emissions of our transport solutions.



MEASURES TO REACH THIS TARGET:

■ On request, we offer our customers both ecologically optimised transport variations (green power, active reduction in CO₂ exhaust gases) as well as the measurement of greenhouse gas emissions and energy consumption of transport services.

■ We have a modern fleet with EURO 6 trucks and thus offer “ecology on the road”. We are on the best way to having all JCL branches certified according to ISO 14001.

■ Intermodal transport, maximum utilisation of means of transport – Avoidance of empty mileage is a standard for us. Intelligent route planning and optimum use of resources help the environment and our customers.

■ Furthermore, the constant search for and use of location-based, environmentally friendly resources offers ecological benefits: for instance, we use 100 % hydro power at all sites in Switzerland.

■ We ensure the professional disposal of packaging material.

■ We organise the return of the special containers and racks for the transport of vehicle parts so that they can be reused.

JCL

IF YOU CAN THINK IT, WE CAN DO IT

JCL LOGISTICS TAKES OVER THE RESPONSIBILITY FOR
YOUR PRODUCTS ALONG THE ENTIRE SUPPLY CHAIN.

www.jcl-logistics.at



© 2016 JCL AG

Publisher: JCL AG
Baarerstrasse 137
CH-6300 Zug
T +41 061 467 12 95
M office@jcl-logistics.com

Editorial: JCL Logistics
Graphical design: JCL Logistics with Kadadesign

If it was not possible, despite intensive research, to determine all the holders of the image rights or to provide all copyright information correctly, we ask the respective rights holders to contact JCL AG.

LOGISTICS

